

**LVTONG** 绿通®

广东绿通新能源电动车科技股份有限公司  
Guangdong Lvtong New Energy Electric Vehicle Technology Co., Ltd  
E30球车零部件目录表  
E30 Series Accessories Catalogue





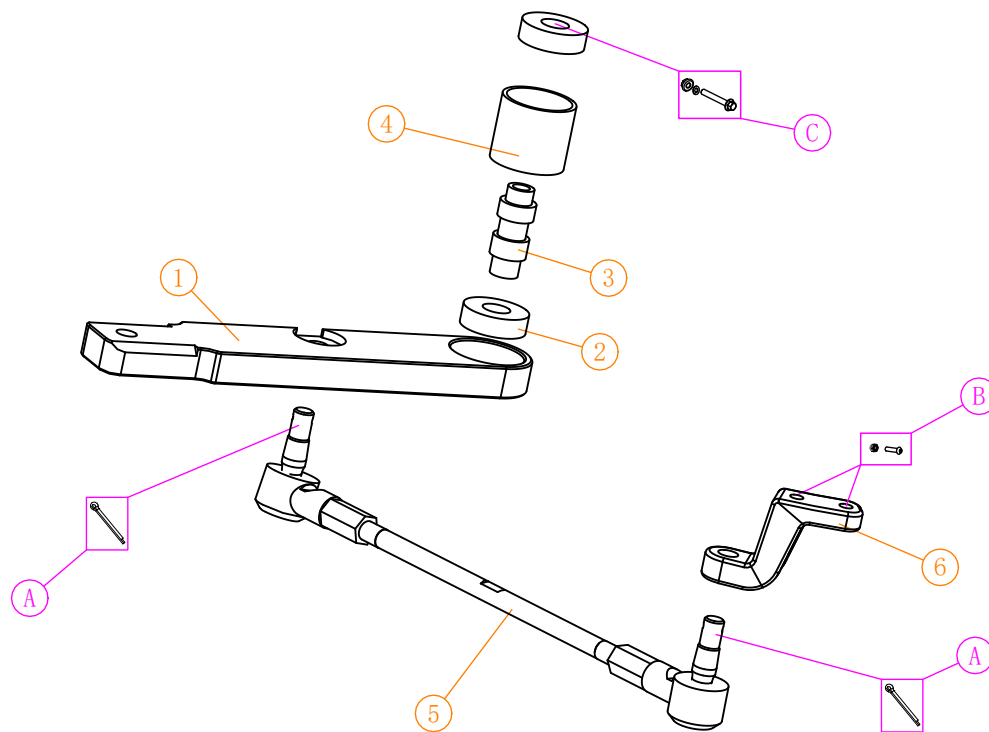
螺丝规格 screw specifications				
NO:	物料编号 Code	物料名称 Screw Name	用量 QTY	备注 Remark
A	3.205.02.040011	M18防松螺栓 M18 anti-loose bolt	1套	
	3.01.003.080004 3.205.01.020004	平垫片 Flat gasket	2	
	3.01.003.100010 3.205.04.030009	外六角普通螺母(M8墨绿色) Hexagon common nut	2	
B	3.01.003.060004 3.205.04.010003	法兰螺丝(6*16) Flange screw	2	
	3.01.003.100066 3.205.03.030010	夹片螺母(M6) Clip nut	2	
C	3.01.003.060004 3.205.04.010003	法兰螺丝(6*16) Flange screw	2	
	3.01.003.100013 3.205.04.030002	法兰自锁螺母(6mm) Flange nut	2	
D	3.01.003.060004 3.205.04.010003	法兰螺丝(6*16) Flange screw	4	
	3.01.003.100066 3.205.03.030010	夹片螺母(M6) Clip nut	2	
	3.01.003.100013 3.205.04.030002	法兰自锁螺母(6mm) Flange nut	2	
E	3.01.003.100079 3.205.03.030018	自攻簧片螺母(M5) Front Cowl Gold clips	2	
	3.01.003.020019 3.205.01.010154	不锈钢木纹圆头十字螺丝 Wood grain round head phillips screws	2	
F	3.01.003.070111 3.205.03.010003	四方螺丝(M6*30) Square screw	5	
	3.01.003.100013 3.205.04.030002	法兰自锁螺母(6mm) Flange nut	5	
	3.01.003.080011 3.205.01.020009	平垫片(1.5*6.5*26) Flat gasket	5	
G	3.01.003.070111 3.205.03.010003	四方螺丝(M6*30) Square screw	6	
	3.01.003.100013 3.205.04.030002	法兰自锁螺母(6mm) Flange nut	6	
	3.01.003.080011 3.205.01.020009	平垫片(1.5*6.5*26) Flat gasket	6	
H	3.01.003.070120 3.205.03.010007	四方螺丝(M6*16) Square screw	4	
	3.01.003.100079 3.205.03.030018	自攻簧片螺母(M5) Front Cowl Gold clips	2	
	3.01.003.110003 3.205.04.010077	十字槽大扁头自攻螺丝 Cross recessed flat head tapping screws	2	5*16 墨绿色
	3.02.014.000113 3.201.16.010147	圆头胶拉钉 Round head plastic pull stud	4	
I	3.01.003.060019 3.205.04.010016	法兰螺丝(6*40) Flange screw	4	
	3.01.003.100013 3.205.04.030002	法兰自锁螺母(6mm) Flange nut	4	
J	3.01.003.060005 3.205.04.010004	法兰螺丝(6*20) Flange screw	2	

J	3.01.003.060015 3.205.04.010013	法兰螺丝(6*35半牙) Flange screw	1	
	3.01.003.080011 3.205.01.020009	平垫片(1.5*6.5*26) Flat gasket	5	
	3.01.003.100013 3.205.04.030002	法兰自锁螺母(6mm) Flange nut	3	
	3.01.003.060006 3.205.04.010005	法兰螺丝(8*20) Flange Screw	2	
	3.01.003.080012 3.205.01.020010	平垫片(2*8.5*24) Flat gasket	2	
	3.01.003.100119 3.205.03.030016	夹片螺母(M8带螺纹) Clip nut	2	

车架零件图 Chassis frame parts				
NO:	物料编号 Code	物料名称 Name	用量 QTY	备注 Remark
1	2.03.109.000001	E30.2车架 E30.2 chassis frame	1	
2	3.201.16.010489	B617.2+2前限位胶 B617.2+2 front limiting rubber	2	
3	2.03.109.000017	E30前减上摆臂梁 E30.2 upper arm	1	
4	3.206.16.000008	下摆臂衬套 Lower arm bush	1	
5	3.03.010.000007 3.202.10.000007	蜗牛喇叭12V Fanfare horn	1	
6	3.201.16.010298	E30.2左包边 E30.2 edging/L	1	
7	3.201.16.010299	E30.2右包边 E30.2 edging/R	1	
8	3.201.16.010297	E30电池盒 E30 battery box	1	
9	2.03.109.000002	E30后罩支撑弯管 E30 rear cover support elbow	1	
10	2.01.110.000002	B827.4单层后铝地板前段 Single layer rear aluminum floor/front	1	
11	2.06.003.000102	E30前铝地板 E30 front aluminum floor	1	
12	3.201.10.000066	E30.2地板胶 E30.2 floor rubber	1	可选
13	3.202.15.000023	DC-DC转换器 DC-DC converter	1	300W
	3.202.15.000024	DC-DC转换器 DC-DC converter	1	500W 可选
14	3.03.017.000179 3.202.03.000047	电子驻车控制器(电动车) Electronic parking controller	1	
15	3.03.010.000008 3.202.10.000008	S14倒车蜂鸣器 S14 reversing buzzer	1	
16	3.02.011.900110 3.201.16.010199	B617电池下固定座 B617 Battery lower fixing seat	3	
17	3.202.04.000251	球车电子驻车辅助线束 Electronic parking auxiliary harness	1	球车电子手刹专用
18	3.03.017.000062 3.202.16.030046	电子闪光器 Fasher	1	
19	3.03.002.000111 3.202.02.010025	翘板开关(电源) Rocker switch(power supply)	1	
20	3.03.002.000104 3.202.02.010026	翘板开关(三档) Rocker switch(three gears)	1	EMB状态使用

# 前拖车臂总成

Front tow arm assy

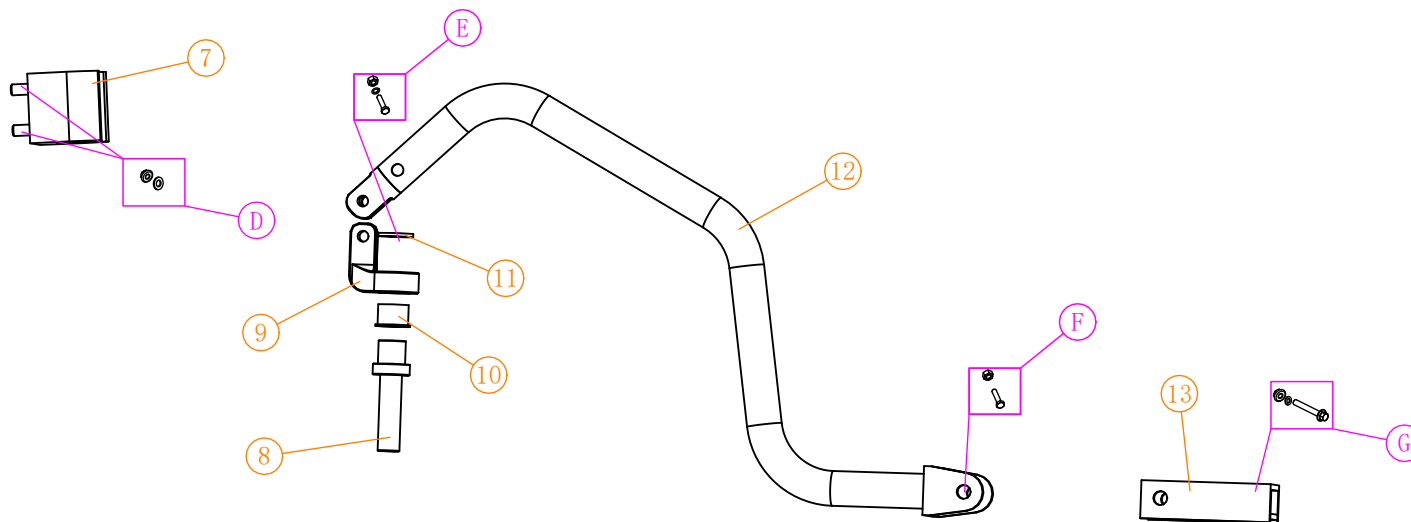


# 拖挂总成零件图

Trailer assy parts

# 后拖车臂总成

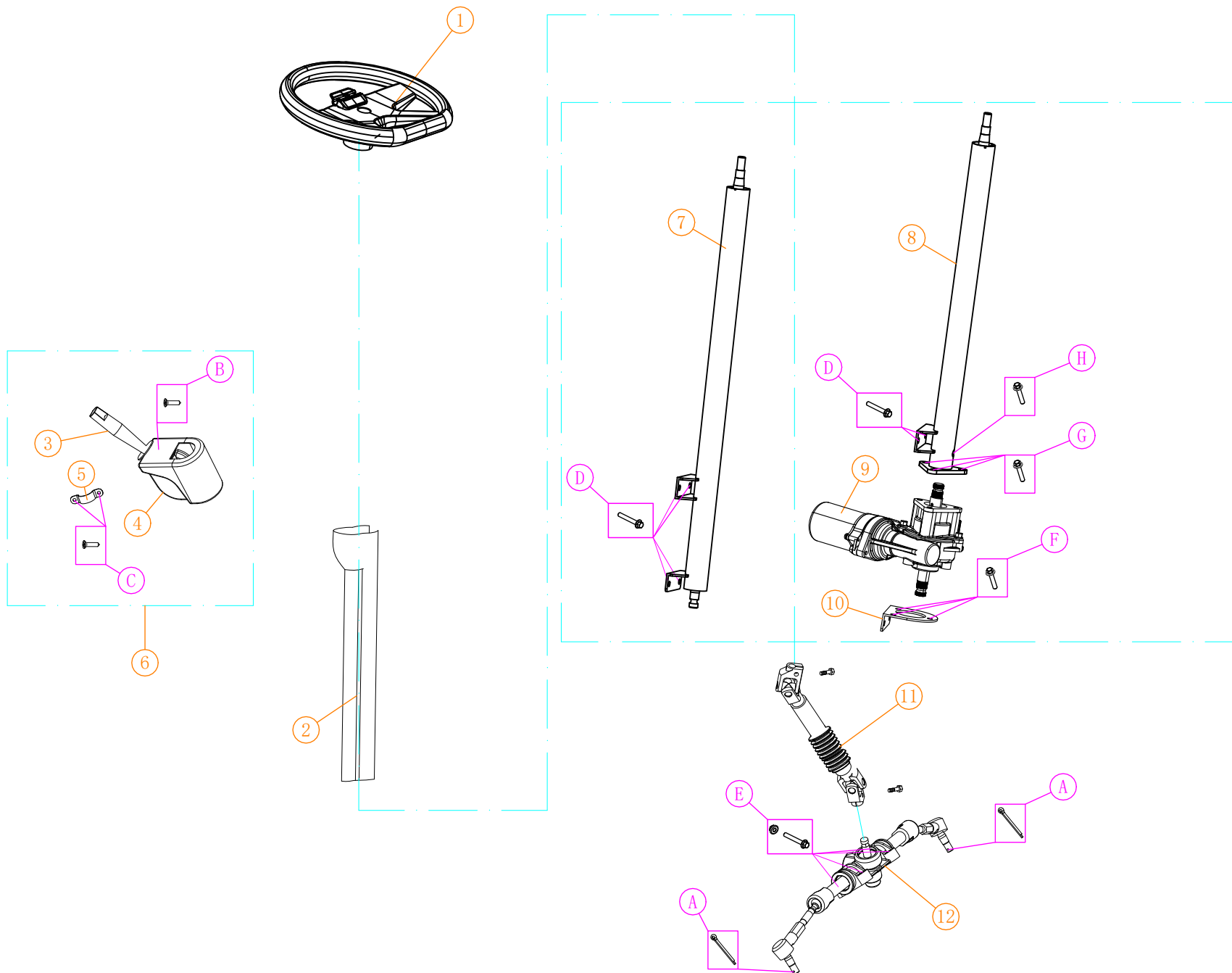
Rear tow arm assy





# 转向系统零件图

Steering system





此视图为左前轮

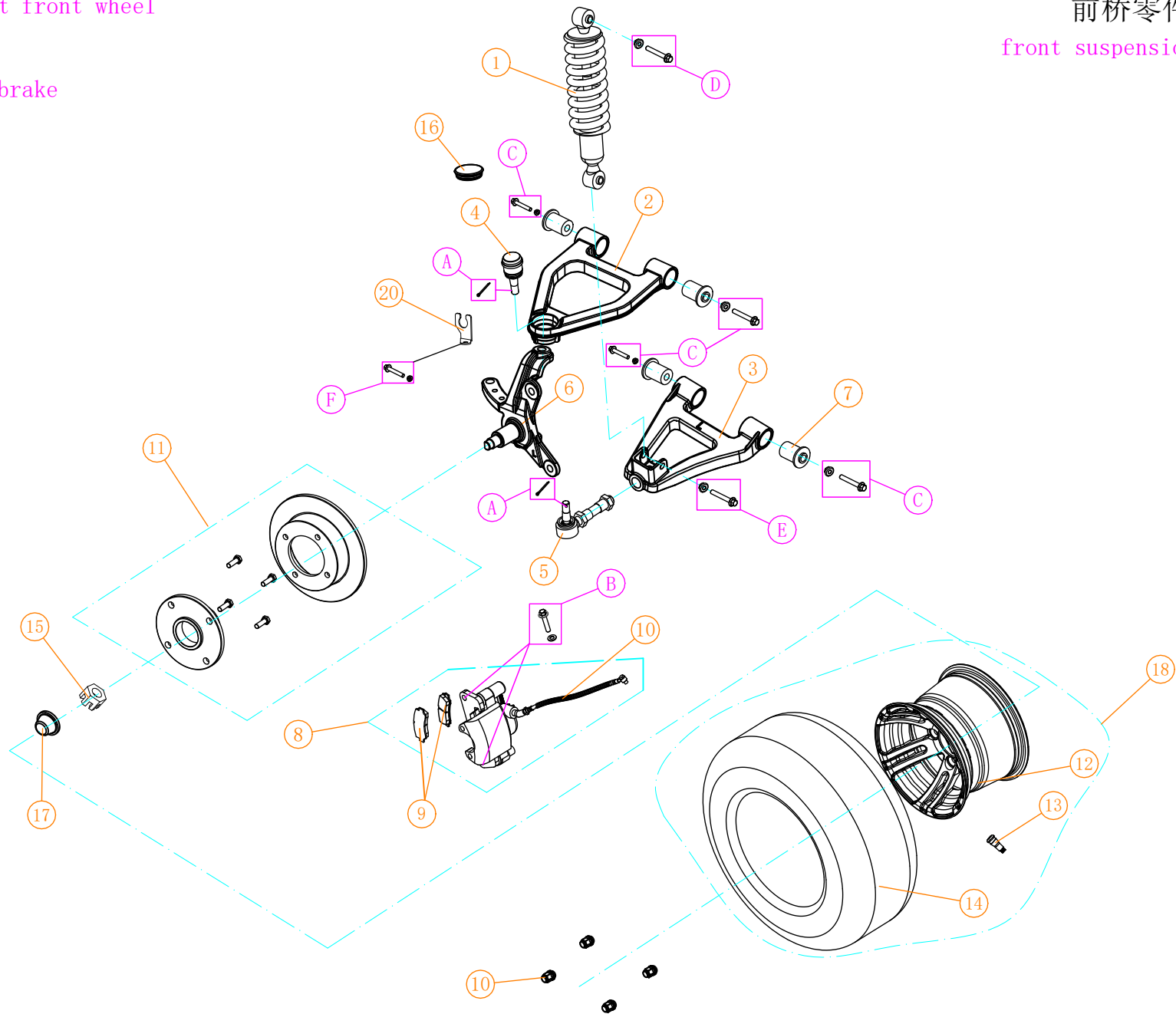
Viewing from Left front wheel

四轮碟刹

Four wheel disc brake

前桥零件图

front suspension drawing





此视图为左前轮

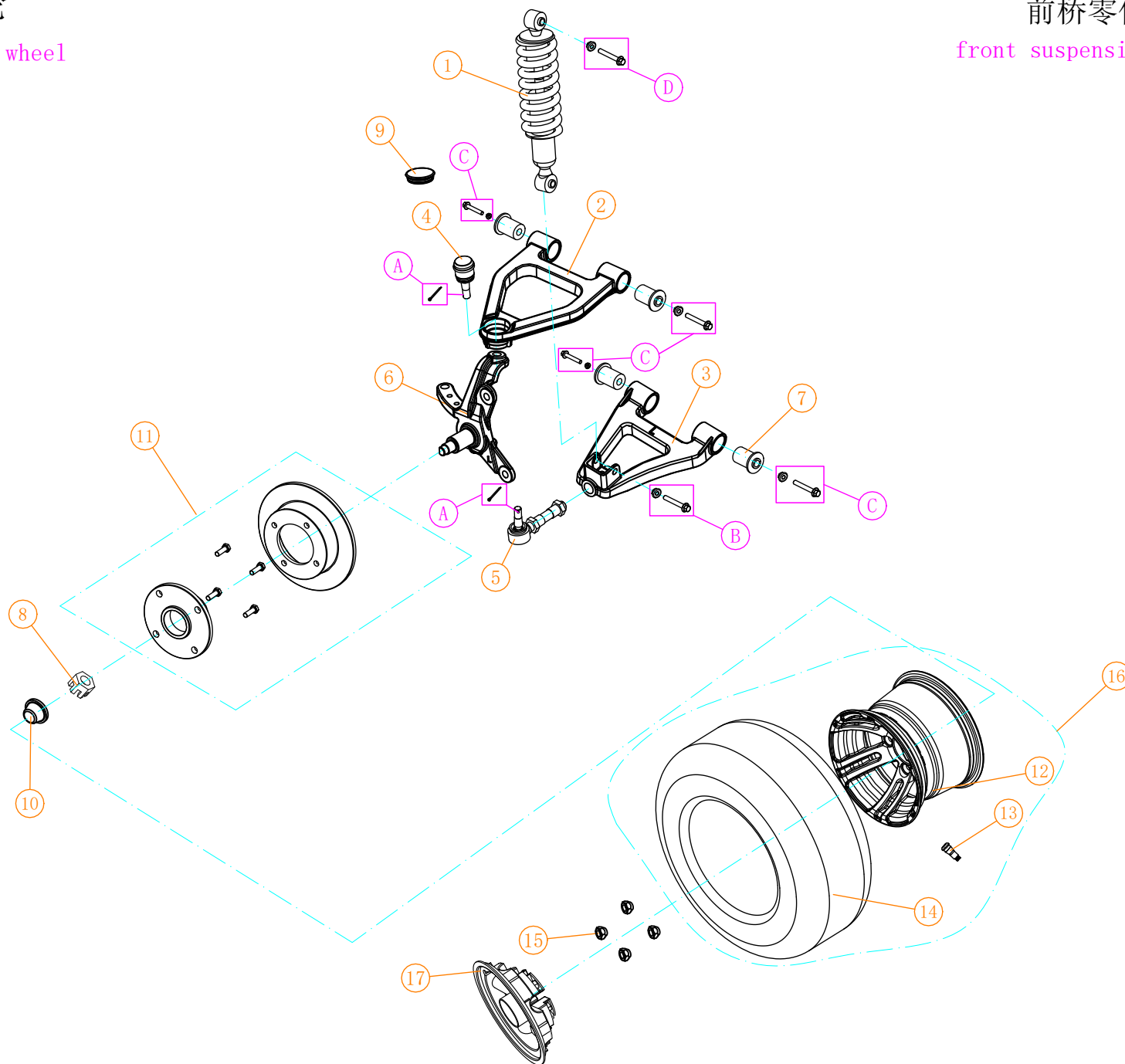
Viewing from Left front wheel

机械刹车

Mechanical brake

前桥零件图

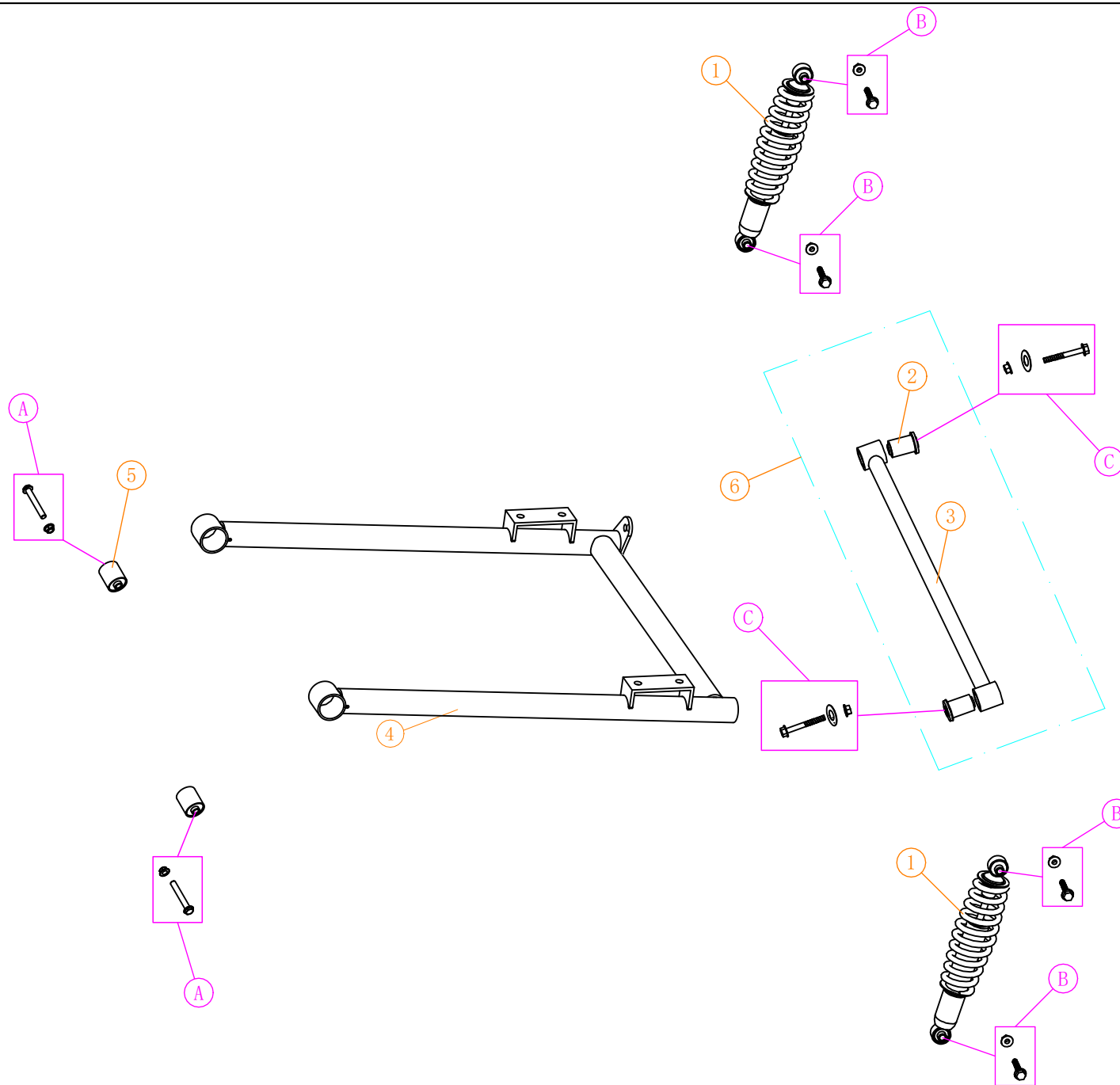
front suspension drawing parts





# 后桥弯管零件图

## Rear suspension parts



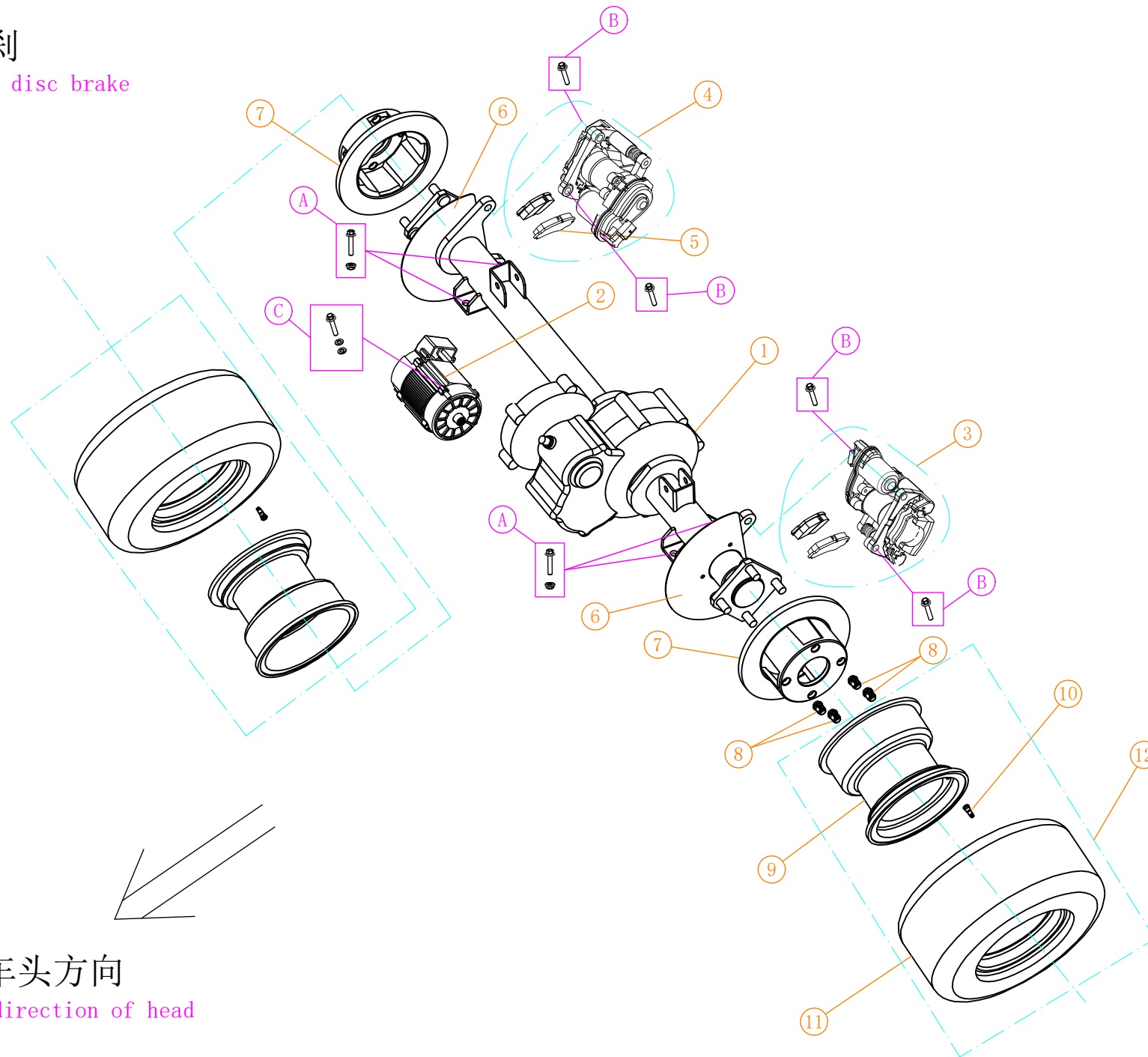
NO:	物料编号 Code	物料名称 Name	用量 QTY	备注 Remark
1	3.206.03.000079	A8可调后减震器总成 Adjustable rear shock absorber assy	2	
2	3.01.004.070021 3.206.18.000013	悬挂衬套 Suspension bush	2	Ø13*50mm
3	2.01.004.210012 2.03.103.100066	A627后平衡杆 A627 rear balancing pole	1	
4	2.03.109.000016	E30后桥弯管 E30 Transaxle bend pipe assy	1	
5	3.01.004.100078 3.206.16.000020	S14型后拖拽臂胶套(小) S14 Rear drag arm rubber sleeve(S)	2	
6	2.03.001.000038 2.08.001.000052	A627后平衡杆总成 A627 rear balancing pole assy	1	
A	3.01.003.060041 3.205.04.010038	法兰螺丝 (12*1.25*90) Flange screw	2	
	3.01.003.100016 3.205.04.030005	法兰自锁螺母 (12mm) Flange nut	2	
B	3.01.003.060060 3.205.04.010050	法兰螺丝 (10*50) Flange screw	4	
	3.01.003.100015 3.205.04.030004	法兰自锁螺母 (10mm) Flange nut	4	
C	3.01.003.080036 3.205.03.020002	平垫片 (3.0*13*40) Gasket	2	镀彩锌
	3.01.003.060108 3.205.04.010060	法兰螺丝 (12*75) Flange Screw	2	
	3.01.003.100016 3.205.04.030005	法兰自锁螺母 (M12) Flange Nut	2	

# 四轮碟刹

Four wheel disc brake

# 后桥零件图(1)

Transaxle parts(1)

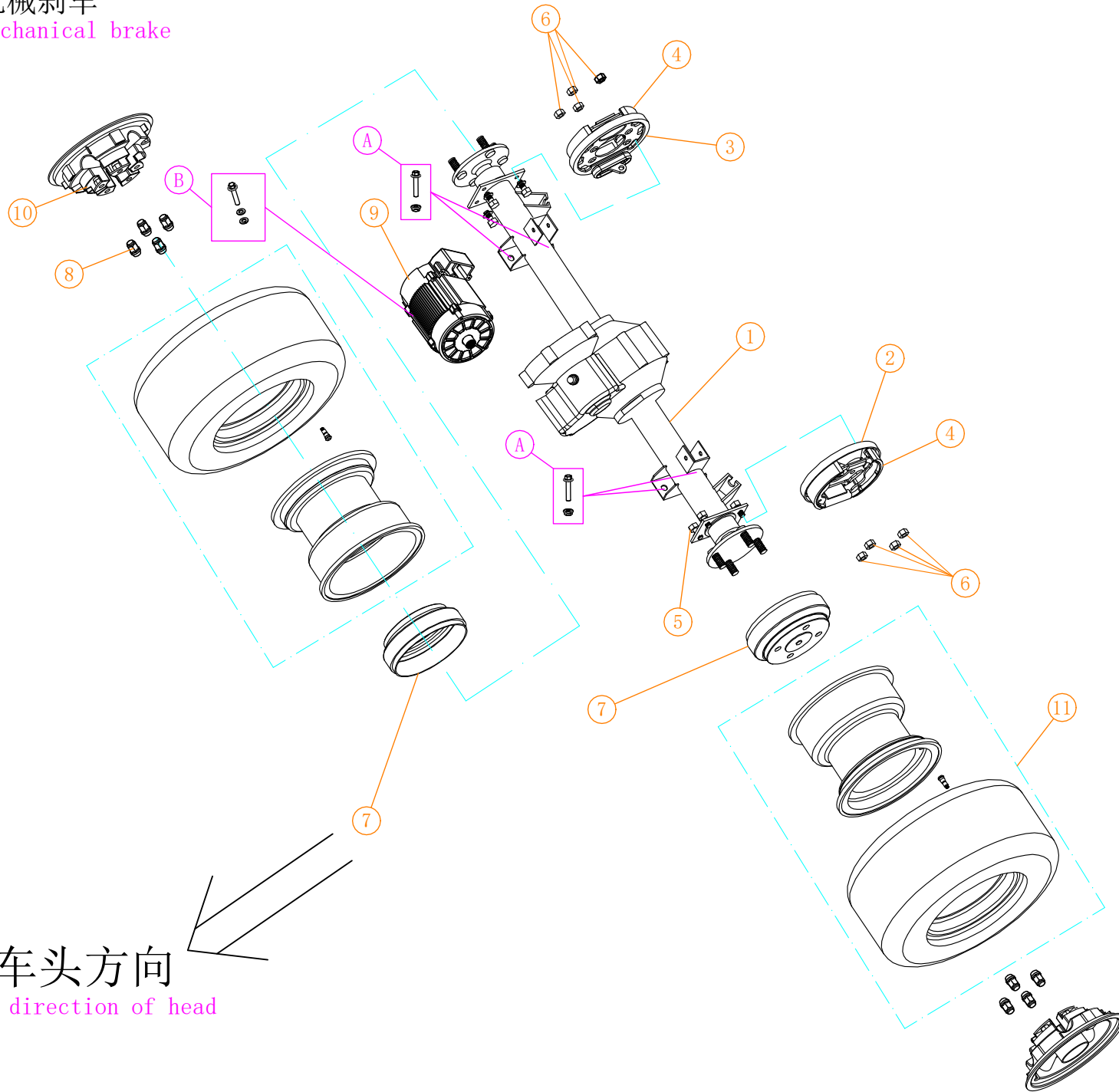


车头方向

The direction of head



机械刹车  
Mechanical brake



后桥轴零件图(2)

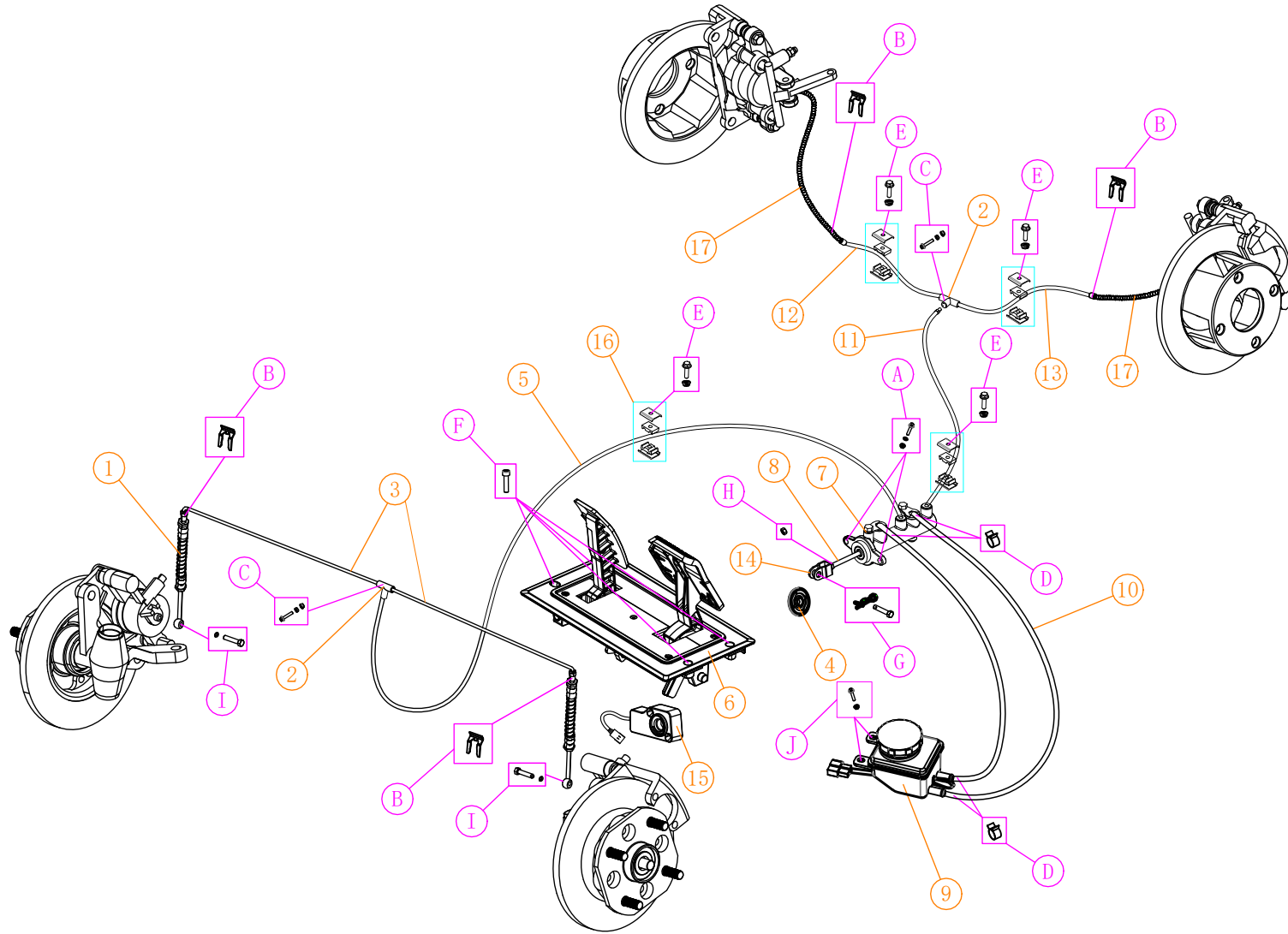
Transaxle parts (2)

NO:	物料编号 Code	物料名称 Name	用量 QTY	备注 Remark
1	3.01.004.010065 3.206.04.000090	A627后桥-A A627 transaxle-A	1	
2	3.01.004.050002 3.206.14.000008	制动器/左 Brake/L	1	
3	3.01.004.050001 3.206.14.000009	制动器/右 Brake/R	1	
4	3.01.004.050049 3.206.14.000049	E型刹车皮 E brake shoe	4	
5	3.01.003.070005 3.205.05.010016	C型挡泥板螺丝 C fender screw	8	
6	3.01.003.100039 3.205.05.030012	C型挡泥板螺母 C fender nut	8	
7	3.01.005.010002 3.206.14.000016	C型刹车毂 Brake drum	2	普通款
8	3.01.003.100038 3.205.05.030019	C型轮毂螺母 C brake drum nut	8	
9	3.03.007.000124 3.202.07.000022	高效三相异步电动机 4KW AC motor	1	4KW 10齿
	3.03.007.000057 3.202.07.000005	高效三相异步电动机 5KW AC motor	1	可选
10	3.02.001.000045 3.201.06.000043	10寸轮罩 10 inch wheel cover	2	
11	2.08.001.000223	10寸铁钢圈车轮总成 10 inch iron steel rim wheel assembly	2	E30.2L
A	3.01.003.060014 3.205.04.010012	法兰螺丝 (12*30) Flange screw	4	
	3.01.003.100016 3.205.04.030005	法兰自锁螺母 (12mm) Flange nut	4	
B	3.01.003.050043 3.205.01.010100	不锈钢外六角螺丝 (6*55) Stainless steel hexagon screw	3	4KW电机 motor
	3.01.003.080003 3.205.01.020003	平垫片 (1.5*6*18) Flat gasket	3	
	3.01.003.080014 3.205.02.020001	弹簧垫片 (M6) Spring gasket	3	
	3.01.003.070021 3.205.01.010144	电机英制螺丝 Screw	1	
	3.01.003.080039 3.205.01.020018	平垫片 (1.5*8*16) Flat gasket	1	5KW电机 motor
	3.01.003.080015 3.205.02.020002	弹簧垫片 (M8) Spring gasket	1	
	3.01.003.060016 3.205.04.010014	法兰螺丝 (8*35) Flange screw	5	
	3.01.003.080004 3.205.01.020004	平垫片 (1.2*8*20) Flat gasket	5	
	3.01.003.080015 3.205.02.020002	弹簧垫片 (M8) Spring gasket	5	

车头方向

The direction of head

刹车系统零件图  
Brake system parts

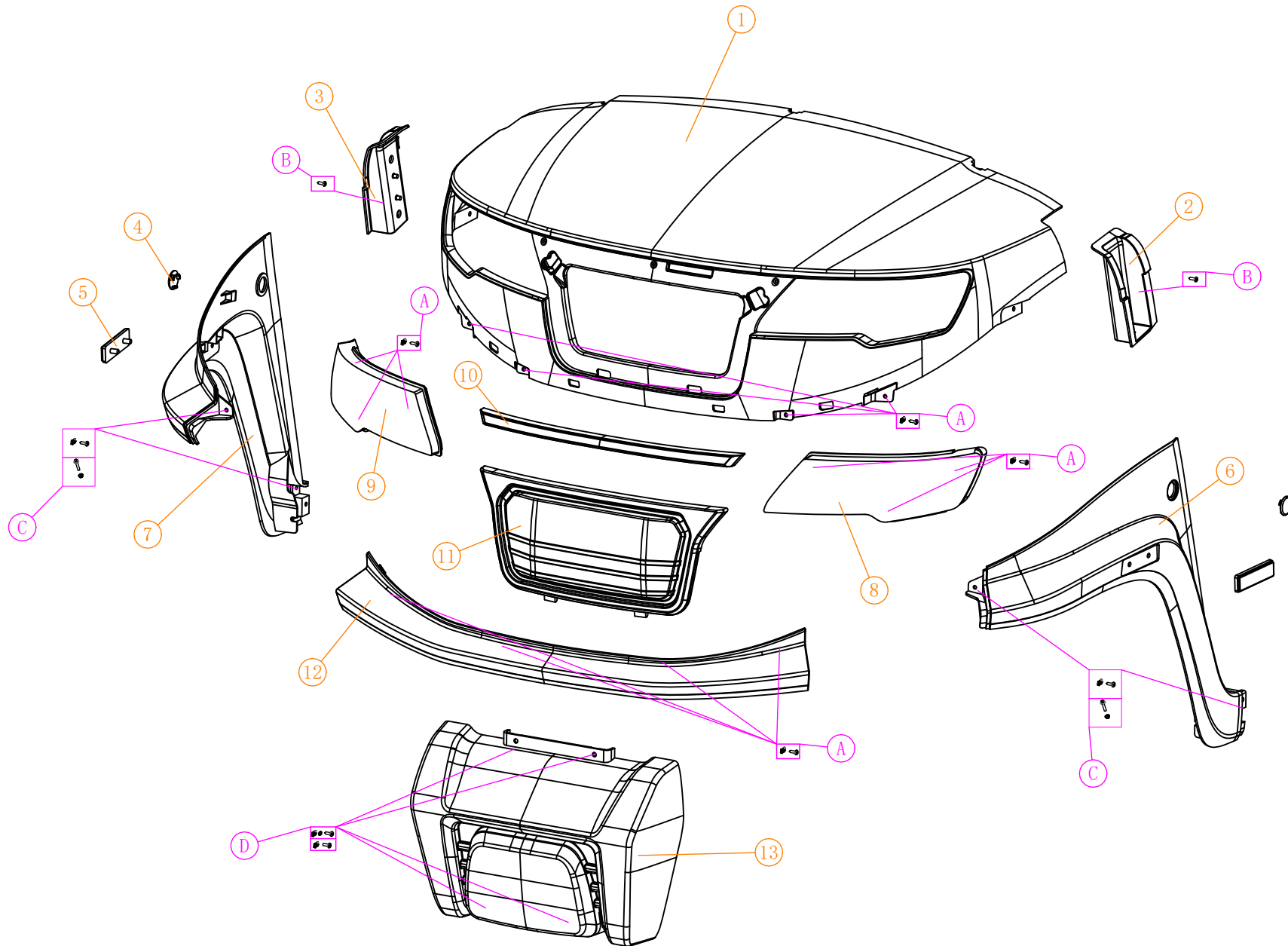


螺丝规格 screw specifications				
NO:	物料编号 Code	物料名称 Name	用量 QTY	备注 Remark
A	3.01.003.060055 3.205.04.010047	法兰螺丝 (8*30) Flange screw	2	
	3.01.003.100014 3.205.04.030003	法兰自锁螺母 (M8) Flange nut	2	
	3.01.003.080004 3.205.01.020004	平垫片 (1.2*8*20) Flat gasket	2	
B	3.01.004.030038 3.205.01.020004	刹车油管卡片 Disc brake tubing card	2	
C	3.01.003.060013 3.205.04.010011	法兰螺丝 (6*30) Flange screw	2	
	3.01.003.100013 3.205.04.030002	法兰自锁螺母 (M6) Flange nut	2	
	3.01.003.080003 3.205.01.020003	平垫片 (1.5*6*18) Flat gasket	2	
D	3.01.006.000442 3.209.02.000100	弹簧卡箍 Spring clamp	4	Ø16
E	3.01.003.060010 3.205.04.010008	法兰螺丝 (6*25) Flange screw	4	
	3.01.003.100013 3.205.04.030002	法兰自锁螺母 (M6) Flange nut	4	
F	3.205.01.010179	内六角圆柱头螺钉 Hexagon socket round head bolt	4	8*25
G	3.01.004.040022 3.209.02.000160	刹车拉线前销钉 Front pin of brake cable	1	10*25
	3.205.05.040012	R型开口销 Type R cotter pin	1	M10主销φ1.7*32
H	3.01.003.100010 3.205.04.030009	外六角普通螺母 Hexagon common nut	1	8mm
I	3.01.003.070041 3.205.03.010001	空心螺丝 Hollow screw	2	Ø10
	3.01.004.030030 3.206.14.000070	S14后制动软油管垫片 Plastic oil pipe gasket	4	
J	3.01.003.060004 3.205.04.010003	法兰螺丝 (6*16) Flange screw	2	
	3.01.003.100066 3.205.03.030010	夹片螺母 Clip nut	2	M6 带螺母

刹车系统零件图 Brake system parts				
NO:	物料编号 Code	物料名称 Name	用量 QTY	备注 Remark
1	3.206.07.000054	A827不锈钢弹簧前软油管 Front plastic oil pipe	2	430mm
2	3.01.004.050028 3.206.14.000026	碟刹三通 Disc brake tee	2	
3	3.01.004.030009 3.206.07.000004	制动铁油管750 Brake steel oil pipe 750	2	
4	3.01.004.050080 3.201.11.000124	制动总泵防尘胶垫 Brake master cylinder dustproof rubber pad	1	
5	3.01.004.030006 3.206.07.000009	制动铁油管370 Brake steel oil pipe 370	1	
6	3.206.14.000203	E30液压刹车踏板 E30 hydraulic brake pedal	1	组件总成 不含加速器
7	3.01.004.050005 3.206.14.000006	制动总泵 Brake master cylinder	1	7/8
8	3.01.006.900067 3.205.03.040007	S14总泵推杆螺杆 Brake master cylinder putter	1	
9	3.01.004.050184 3.206.14.000134	刹车油壶-B Brake oil tank-B	1	
10	3.01.004.030039 3.206.07.000046	油壶软管 Oil tank pipe	2米	
11	3.01.004.030006 3.206.07.000009	制动铁油管370 Brake steel oil pipe 370	1	
12	3.01.004.030009 3.206.07.000004	制动铁油管750 Brake steel oil pipe 750	1	
13	3.01.004.030006 3.206.07.000009	制动铁油管370 Brake steel oil pipe 370	1	
14	3.01.004.050154 3.206.14.000037	刹车踏板总泵连接叉 Connecting fork	1	
15	3.03.017.000108 3.202.05.000014	霍尔加速器-D Accelerator	1	
16	3.01.006.000117 3.201.16.020170	锁扣 Locking buckle	4	
17	3.01.004.030040 3.206.07.000026	前软油管 Rear plastic oil pipe	2	600mm



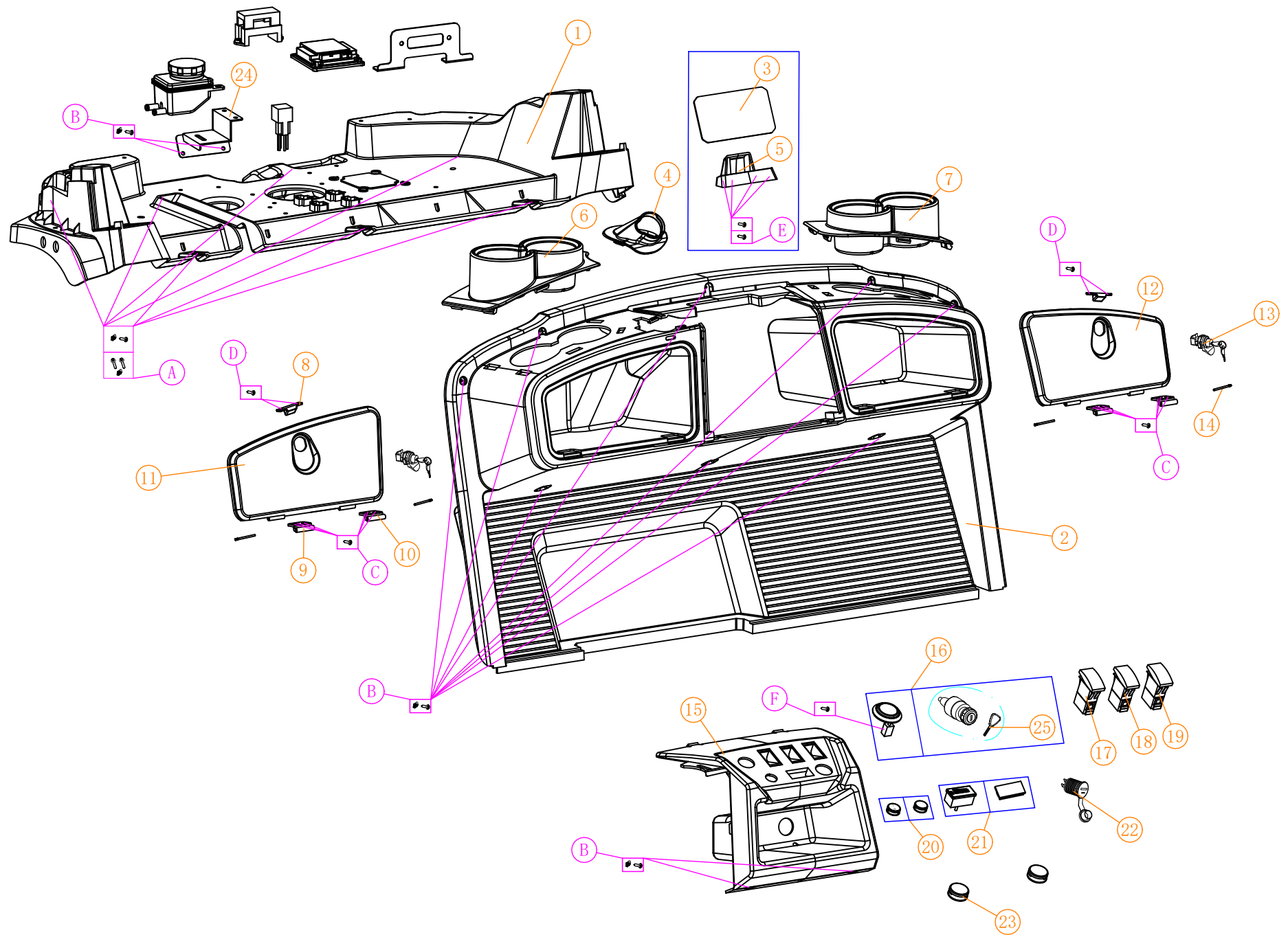
前覆盖件零件图  
Front body cover parts





# 仪表台零件图(1)

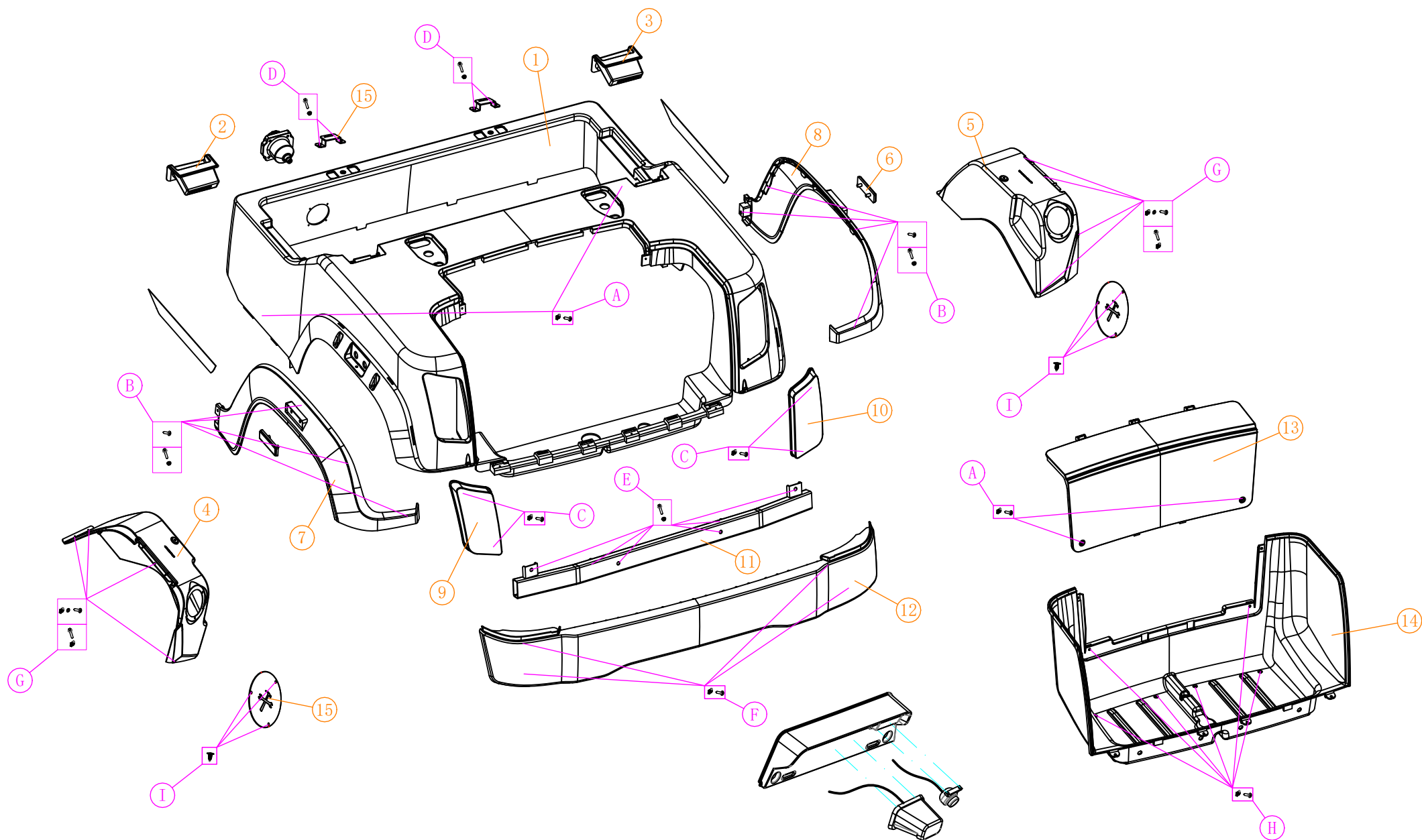
## Dashboard parts(1)







后覆盖件零件图  
Rear body cover parts



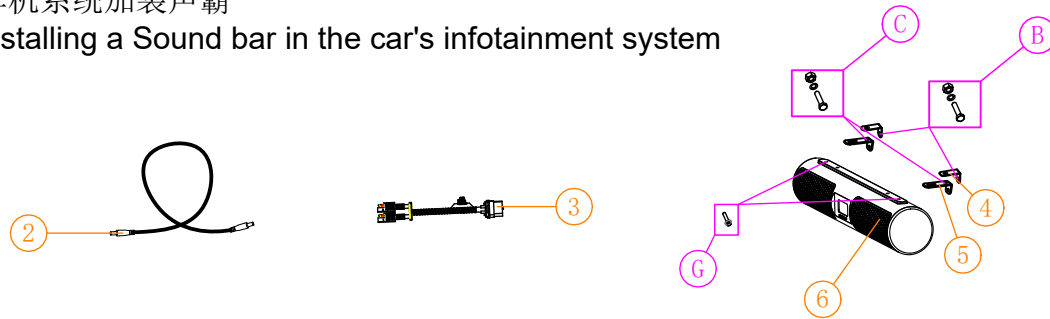
螺丝规格 screw specifications				
NO:	物料编号 Code	物料名称 Name	用量 QTY	备注 Remark
A	3.01.003.100079 3.205.03.030018	自攻簧片螺母(M5) Front Cowl Gold clips	6	
	3.01.003.110003 3.205.04.010077	十字槽大扁头自攻螺丝 Cross recessed flat head tapping screws	6	5*16 墨绿色
B	3.01.003.060004 3.205.04.010003	法兰螺丝 Flange screw	2	
	3.01.003.100013 3.205.04.030002	法兰自锁螺母 Flange nut	2	
	3.01.003.110003 3.205.04.010077	十字槽大扁头自攻螺丝 Cross recessed flat head tapping screws	6	5*16 墨绿色
C	3.01.003.100079 3.205.03.030018	自攻簧片螺母(M5) Front Cowl Gold clips	4	
	3.01.003.110003 3.205.04.010077	十字槽大扁头自攻螺丝 Cross recessed flat head tapping screws	4	5*16 墨绿色
D	3.01.003.060019 3.205.04.010016	法兰螺丝 Flange screw	4	
	3.01.003.100013 3.205.04.030002	法兰自锁螺母 Flange nut	4	
E	3.01.003.060004 3.205.04.010003	法兰螺丝 Flange screw	2	
	3.01.003.060015 3.205.04.010013	法兰螺丝 Flange screw	2	
	3.01.003.060006 3.205.04.010005	法兰螺丝 Flange screw	2	
	3.01.003.100014 3.205.04.030003	法兰自锁螺母 Flange nut	2	
F	3.01.003.110003 3.205.04.010077	十字槽大扁头自攻螺丝 Cross recessed flat head tapping screws	4	5*16 墨绿色
	3.01.003.100138 3.205.03.030020	沉头带介内六角内外牙螺母 Nut	4	
G	3.01.003.110003 3.205.04.010077	十字槽大扁头自攻螺丝 Cross recessed flat head tapping screws	4	5*16 墨绿色
	3.01.003.060004 3.205.04.010003	法兰螺丝 Flange screw	1	
	3.01.003.100066 3.205.03.030010	夹片螺母 Clip nut	1	M6 带螺母
	3.01.003.100079 3.205.03.030018	自攻簧片螺母(M5) Front Cowl Gold clips	1	
	3.01.003.080009 3.205.01.020008	平垫片(不锈钢1.0*5*16) Flat gasket	1	
H	3.01.003.110002 3.205.04.010076	十字槽大扁头螺丝 Cross recessed flat head screws	2	6*16 墨绿色
	3.01.003.100066 3.205.03.030010	夹片螺母 Clip nut	2	M6 带螺母
	3.01.003.110003 3.205.04.010077	十字槽大扁头自攻螺丝 Cross recessed flat head tapping screws	6	5*16 墨绿色
I	3.02.014.000113 3.201.16.010147	圆头胶拉钉 Round head plastic pull stud	6	

后覆盖件零件图 Rear body cover parts				
NO:	物料编号 Code	物料名称 Name	用量 QTY	备注 Remark
1	3.201.02.010090	E30后罩(注塑件) E30 rear body	1	
2	3.201.16.010303	E30安全带盒(左) E30 safety belt box/L	1	
3	3.201.16.010304	E30安全带盒(右) E30 safety belt box/R	1	
4	3.201.05.000071	E30后挡泥罩(左) E30 rear fender/L	1	
5	3.201.05.000072	E30后挡泥罩(右) E30 rear fender/R	1	
6	3.202.01.010097	反射器(带DOT认证) Reflector (with DOT certification)	2	KM-210红色
7	3.201.06.000071	E30左后轮眉 E30 left rear fender	1	
8	3.201.06.000072	E30右后轮眉 E30 right rear fender	2	
9	3.202.01.010062	E30后尾灯总成左 E30 rear light assembly/L	1	
10	3.202.01.010063	E30后尾灯总成右 E30 rear light assembly/R	1	
11	2.03.109.000018	E30后保险杠固定支架 E30 rear bumper mounting bracket	1	
12	3.201.16.010300	E30后保险杠 E30 rear bumper	1	
13	3.201.16.010329	E30电控检修盖板 Electrical control maintenance cover plate	1	
14	3.201.16.010294	E30球包仓 E30 ball bag storage	1	
15	3.02.011.300064 3.201.12.000001	A627尾灯检修盖板 A627 Repair board for rear light	2	
16				
17				
18				
19				
20				
21				
22				
23				

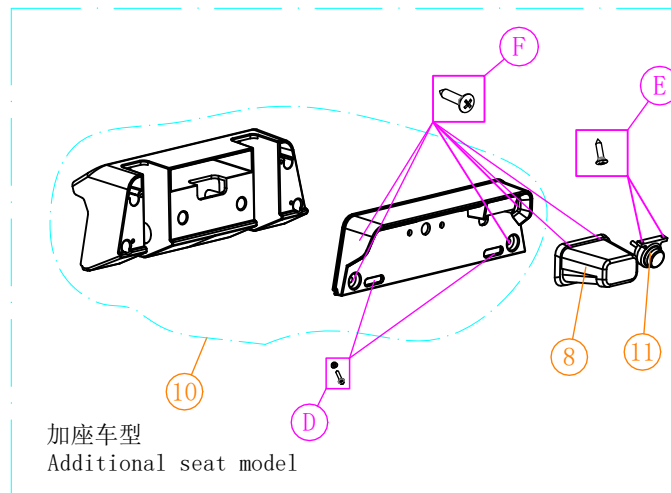
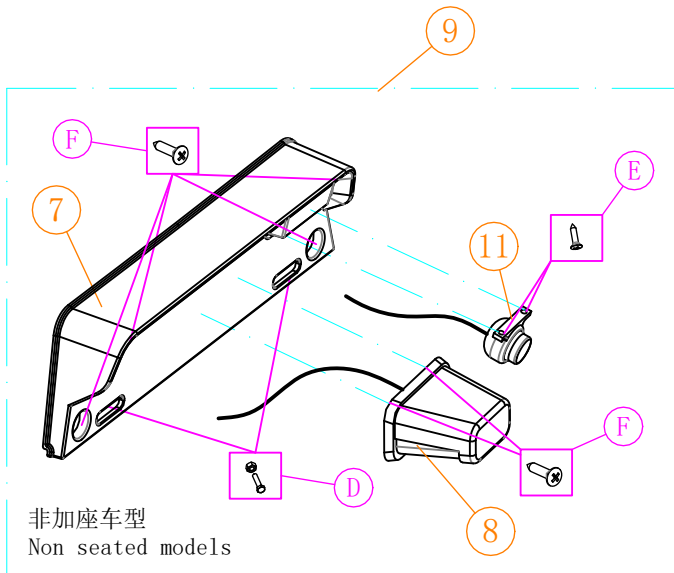
车机系统加装CD喇叭  
Installing CD speakers in the car's infotainment system



车机系统加装声霸  
Installing a Sound bar in the car's infotainment system



车机系统加装牌照灯  
Installing license plate lights in the vehicle's infotainment system



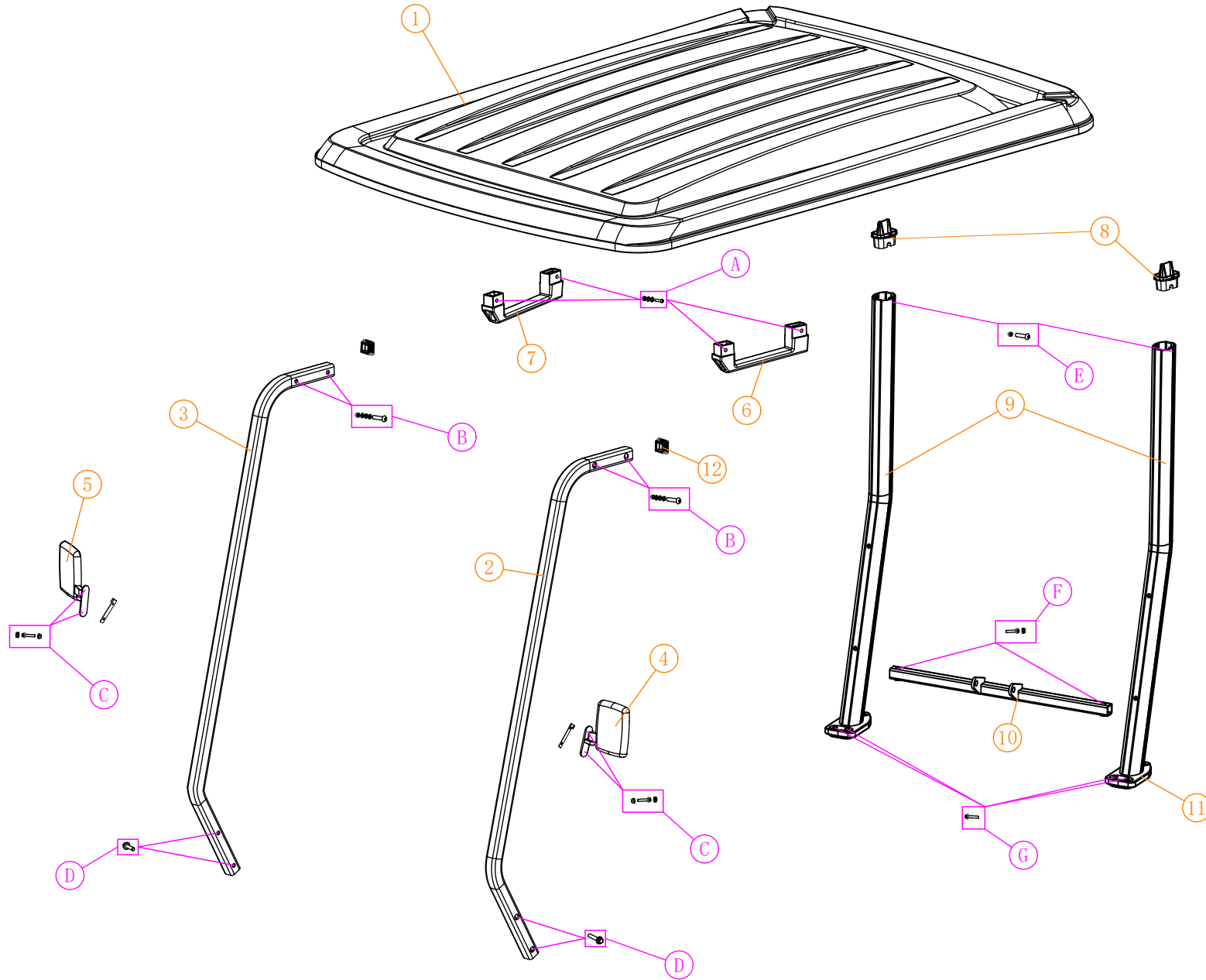
车机系统加装零件图

Installing parts in the car's infotainment system

NO:	物料编号 Code	物料名称 Name	用量 QTY	备注 Remark
1	3.03.010.000001 3.202.10.000001	CD喇叭 CD speaker	2	
2	3.202.16.030217	AUX音频延长线 AUX audio extension cable	1	
3	3.202.16.030224	SAE连接线 SAE cable	1	
4	2.03.108.000057	C727音霸固定板加强板 C727 Sound strengthening plate	2	
5	2.03.108.000056	C727音霸固定板 C727 Sound amplifier fixing plate	2	
6	3.202.10.000038	声霸 Sound bar	1	
7	3.201.16.010360	C727牌照灯与摄像头固定座 C727 license plate light and camera mounting bracket	1	
8	3.202.01.010074	DOT牌照灯 DOT license plate light	1	
9	2.08.001.000105	C727牌照座总成 C727 license plate seat assembly	1	
10	3.201.16.010473	E30牌照灯与摄像头连接座 Connecting seat	1	
11	3.202.16.030238	倒车摄像头 Reversing camera	1	
A	3.01.003.030028 3.205.01.010165	不锈钢圆头十字螺丝 Stainless steel round head cross screws	8	4*20
	3.01.003.100001 3.205.01.030001	不锈钢外六角普通螺母 Stainless steel hex plain nut	8	4mm
	3.01.003.080002 3.205.01.020002	平垫片 Flat gasket	8	1.0*4*12
B	3.01.003.100008 3.205.01.030008	不锈钢自锁螺母(M8) Hexagon common nut	2	
	3.01.003.080004 3.205.01.020004	平垫片 Flat gasket	4	
	3.01.003.050053 3.205.01.010109	不锈钢外六角螺丝(8*45) Stainless steel hexagon screw	2	
C	3.01.003.100008 3.205.01.030008	不锈钢自锁螺母(M8) Hexagon common nut	2	
	3.01.003.080004 3.205.01.020004	平垫片 Flat gasket	4	
	3.01.003.050002 3.205.01.010084	外六角不锈钢螺丝(8*20) Hexagon stainless steel screw	2	
D	3.01.003.050001 3.205.01.010083	外六角不锈钢螺丝(6*16) Hexagonal stainless steel screw	2	
	3.01.003.100009 3.205.04.030008	外六角普通螺母(M6) Hexagon common nut	2	
	E	3.205.01.010205	不锈钢木纹平头十字螺丝(3*14) Stainless steel wood grain flat head cross screw	4
F	3.01.003.110008 3.205.04.010082	十字槽大扁头自攻螺丝(5*20) Cross recessed large flat head self tapping screws	12	
G	3.01.003.060004 3.205.04.010003	法兰螺丝(6*16) Flange screw	2	





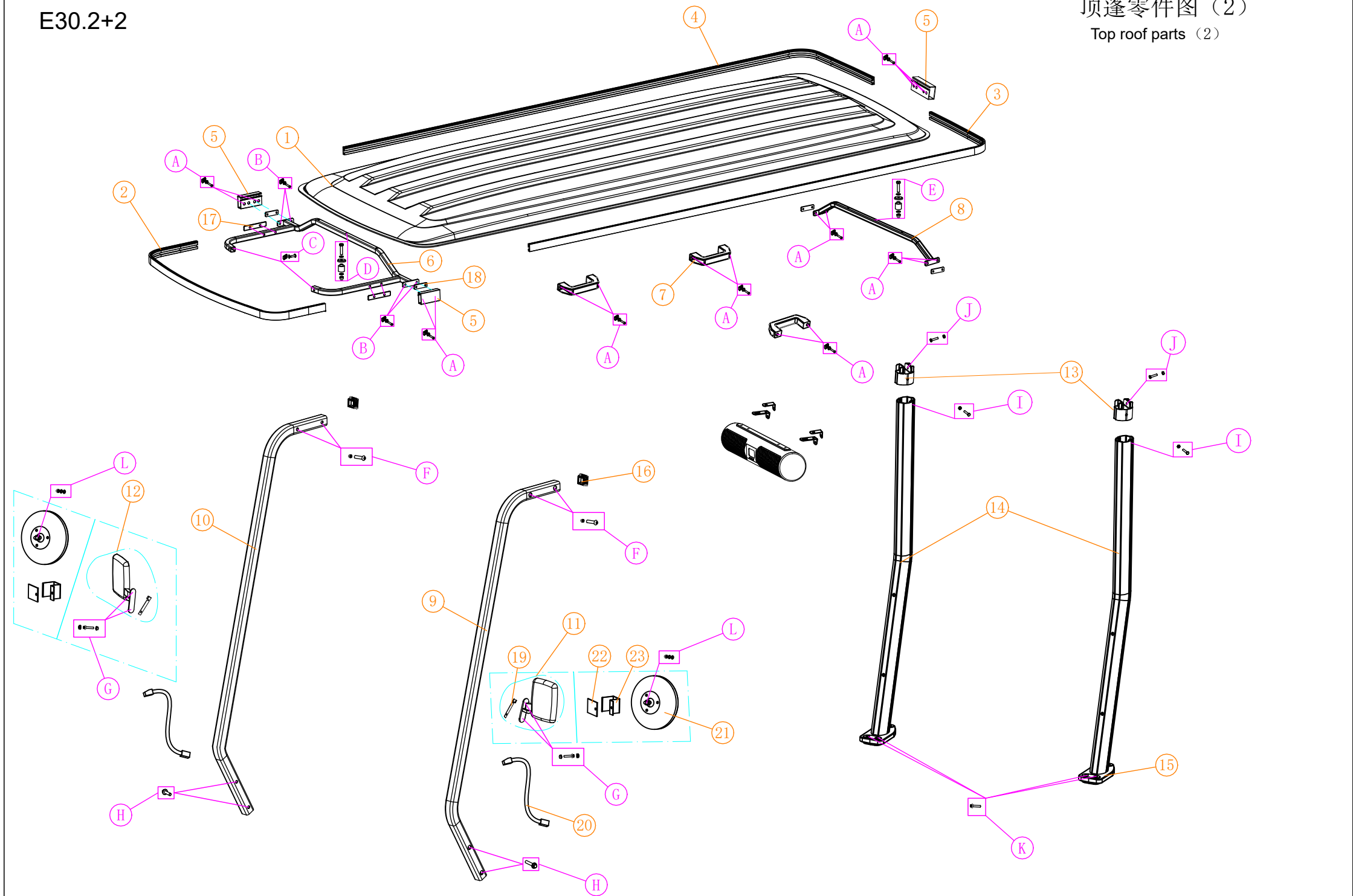




E30.2+2

顶蓬零件图 (2)

Top roof parts (2)



螺丝规格 screw specifications				
NO:	物料编号 Code	物料名称 Name	用量 QTY	备注 Remark
A	3.01.003.100115 3.205.01.030013	T型滑块螺母(M8) T slider nut	18	10*19*8
	3.01.003.070079 3.205.01.010117	内六角平圆头螺钉(8*16) Hexagon socket flat round head screws	18	
	3.01.003.080015 3.205.02.020002	弹簧垫片(8mm) Spring shim	18	
B	3.01.003.100115 3.205.01.030013	T型滑块螺母(M8) T slider nut	4	10*19*8
	3.01.003.070073 3.205.01.010114	内六角平圆头螺钉(8*25) Hexagon socket flat round head screws	4	
C	3.01.003.100056 3.205.05.030013	滑块螺母M8 Slider nut M8	2	8.7*18*18
	3.01.003.070064 3.205.01.010112	内六角平圆头螺钉(8*40) Hexagon socket flat round head screws	2	
	3.01.003.080015 3.205.02.020002	弹簧垫片(8mm) Spring shim	2	
D	3.01.003.050051 3.205.01.010107	不锈钢外六角螺丝(8*80) Stainless steel hexagon screw	1	
	3.01.003.080004 3.205.01.020004	平垫片(1.2*8*20) Flat gasket	2	
	3.02.011.000040 3.201.02.010056	顶蓬橡胶盖 Top roof rubber collar	1	
	3.02.011.000237 3.201.02.010067	顶蓬橡胶柱(φ25*32) Top roof rubber column	1	
	3.01.003.100004 3.205.01.030004	不锈钢帽母(M8) Stainless steel cap mother	1	
E	3.01.003.050061 3.205.01.010176	不锈钢外六角螺丝(8*95) Stainless steel hexagon screw	1	
	3.01.003.080004 3.205.01.020004	平垫片(1.2*8*20) Flat gasket	2	
	3.02.011.000040 3.201.02.010056	顶蓬橡胶盖 Top roof rubber collar	1	
	3.02.011.000238 3.201.02.010068	顶蓬橡胶柱(φ25*48) Top roof rubber column	1	
	3.01.003.100004 3.205.01.030004	不锈钢帽母(M8) Stainless steel cap mother	1	
F	3.01.003.050010 3.205.01.010090	外六角不锈钢螺丝(8*40) Flange screw	4	
	3.205.01.030023	外六角30铝管台阶螺母 Outer hexagonal 30 aluminum tube step nut	4	
G	3.01.003.060022 3.205.04.010019	法兰螺丝(6*45) Flange screw	4	
	3.01.003.100013 3.205.04.030002	法兰自锁螺母(6mm) Flange nut	4	
	3.201.13.000002	φ6法兰螺丝盖(新) φ6 flange screw cover	4	
H	3.205.01.010200	外六角30铝管凸肩螺栓 30 aluminum tube shoulder bolt	4	

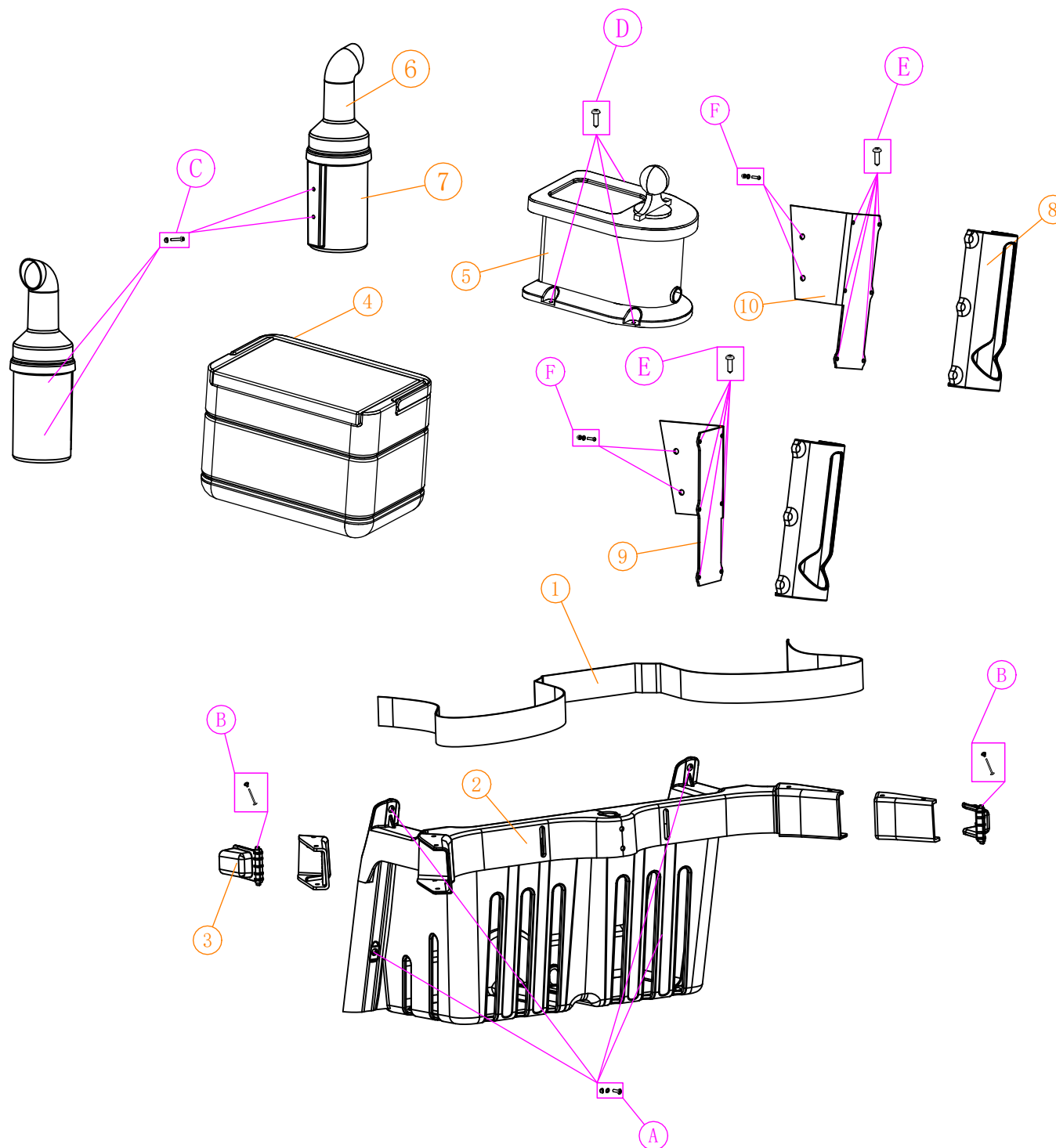
E30.2+2				
I	3.01.003.050048 3.205.01.010104	不锈钢外六角螺丝(8*70) Stainless steel hexagon screw	2	
	3.01.003.100008 3.205.01.030008	不锈钢自锁螺母(M8) Stainless steel nut	2	
J	3.01.003.050053 3.205.01.010109	不锈钢外六角螺丝(8*45) Stainless steel hexagon screw	2	
	3.01.003.100008 3.205.01.030008	不锈钢自锁螺母(M8) Stainless steel nut	2	
K	3.01.003.060016 3.205.04.010014	法兰螺丝(8*35) Flange screw	4	
	3.205.01.040018	不锈钢弹簧垫片(6mm) Stainless steel spring gasket	2	
L	3.01.003.080003 3.205.01.020003	平垫片(1.5*6*18) Flat gasket	2	
	3.01.003.100117 3.205.01.030017	M6尼龙带盖螺母 M6 Nylon cover nut	2	

顶蓬零件图(2) Top roof parts (2)				
NO:	物料编号 Code	物料名称 Name	用量 QTY	备注 Remark
1	2.02.001.600011 2.04.104.100003	A827.4吸塑顶蓬 A827.4 top roof	1	珍珠黑
2	2.01.003.070111 2.02.104.000004	827.2+2顶蓬边框前段 Front of canopy frame	1	
3	2.01.003.070113 2.02.104.000003	827.2+2顶蓬边框后段/左 Rear of canopy frame/L	1	
4	2.01.003.070117 2.02.104.000002	827.2+2顶蓬边框后段/右 Rear of canopy frame/R	1	
5	2.02.104.000165	827太阳能顶蓬边框包边 827 Solar roof border edging	3	
6	2.01.004.010251 2.03.104.100005	827.2+2顶蓬前支撑架 Roof front support frame	1	
7	3.02.011.800068 3.201.02.010022	827顶蓬拉手 827 top roof handle	3	
8	2.03.109.000024	E30.2+2顶蓬中横撑 Roof middle support frame	1	
9	2.03.109.000004	E30.2前挡风玻璃支架左 Windshield holder/L	1	
10	2.03.109.000005	E30.2前挡风玻璃支架右 Windshield holder/R	1	
11	3.02.013.000026 3.201.07.000042	627后视镜/左 627 Side mirror/L	1	
	3.201.07.000049	球车带灯后视镜/左 Cart with light mirror/L	1	可选
12	3.02.013.000024 3.201.07.000043	627后视镜/右 627 Side mirror/R	1	
	3.201.07.000050	球车带灯后视镜/右 Cart with light mirror/R	1	可选
13	3.02.011.300053 3.201.02.010012	A627顶蓬后支撑连接座 Connecting seat of top roof rear support	2	
14	2.03.109.000006	E30.2顶蓬后支架 E30.2 rear windshield holder	2	
15	3.104.01.000257	E30后支撑底座 E30 rear support base	2	
16	3.02.010.000030 3.201.13.000036	30铝方管堵盖 Blanking cap	2	
17	3.201.16.010371	827顶蓬支架垫片 827 Roof support gasket	2	
18	3.201.16.010372	827顶蓬包边垫片 827 roof edging gasket	4	
19	3.02.014.000302 3.201.11.000097	A627后视镜胶垫 Rearview mirror rubber pad	2	
20	3.202.16.030239	带灯后视镜延长线 Extension cord for rearview mirror with light	2	配合带灯后视镜使用
21	3.201.07.000051	圆后视镜 Side mirror	2	可选
22	2.03.109.000027	30方管管箍压板 Press plate		
23	2.03.109.000026	30方管管箍折板 Folding plate		



# 球包零件图

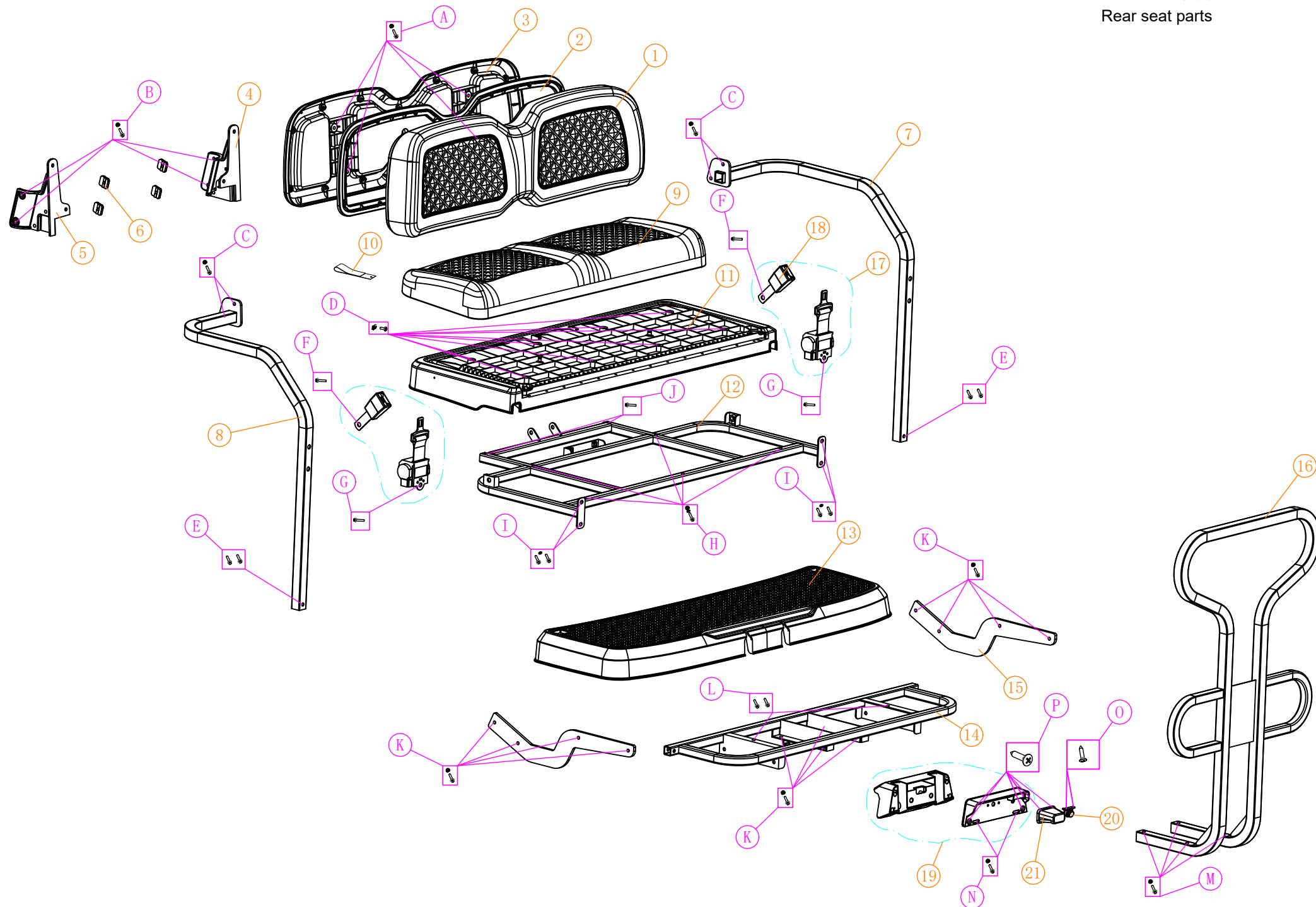
## Golf bag parts



NO:	物料编号 Code	物料名称 Name	用量 QTY	备注 Remark
1	3.02.014.000227 3.201.16.010081	球包带 (长度2100mm) Golf bag belt (2100mm)	1	
2	3.201.16.010302	E30衣物篮 Front of canopy frame	1	
3	3.209.02.000291	A627球包带扣 (铝合金) A627 golf bag belt knot	2	
4	3.02.014.000136 3.201.16.010079	C型冰桶 Cool box / C	1	
5	3.01.006.000152 3.201.16.010095	洗球器 Ball washer	1	
6	3.02.014.000135 3.201.16.010078	沙桶(内) Sand barrels(inter)	2	
7	3.02.014.000134 3.201.16.010077	沙桶(外) Sand barrels(outer)	2	
8	3.201.16.010373	C727卡球盒 E30 cartridge box	2	
9	2.03.109.000028	卡球盒固定折板/左 Cartridge box fixed folding plate/L	1	
10	2.03.109.000029	卡球盒固定折板/右 Cartridge box fixed folding plate/R	1	
A	3.01.003.040011 3.205.01.010056	不锈钢平头十字螺丝 Flat head cross screw	4	M6*20
	3.01.003.100013 3.205.04.030002	法兰自锁螺母 (M6) Flange nut M6	4	
	3.01.003.080003 3.205.01.020003	平垫片 Fixing plate	8	
B	3.01.003.100124 3.205.01.010146	子母铆钉 Daughter rivet	2	
C	3.01.003.060030 3.205.04.010027	法兰螺丝 (6*60) Flange screw	4	
	3.01.003.100013 3.205.04.030002	法兰自锁螺母 (6mm) Flange nut	4	
D	3.01.003.020008 3.205.01.010010	不锈钢木纹圆头十字螺丝 Wood grain round head Phillips screw	3	6*26
E	3.01.003.100133 3.205.01.010174	不锈钢大扁头十字自攻螺钉 Stainless steel tapping screw	12	4*16
F	3.01.003.070094 3.205.01.010127	内六角平圆头螺钉 (6*40) Hexagon socket flat round head screws	4	
	3.01.003.080003 3.205.01.020003	平垫片 (1.5*6*18) Flat gasket	4	
	3.01.003.100117 3.205.01.030017	M6尼龙带盖螺母 M6 Nylon cover nut	4	

# 折叠加座零件图

Rear seat parts



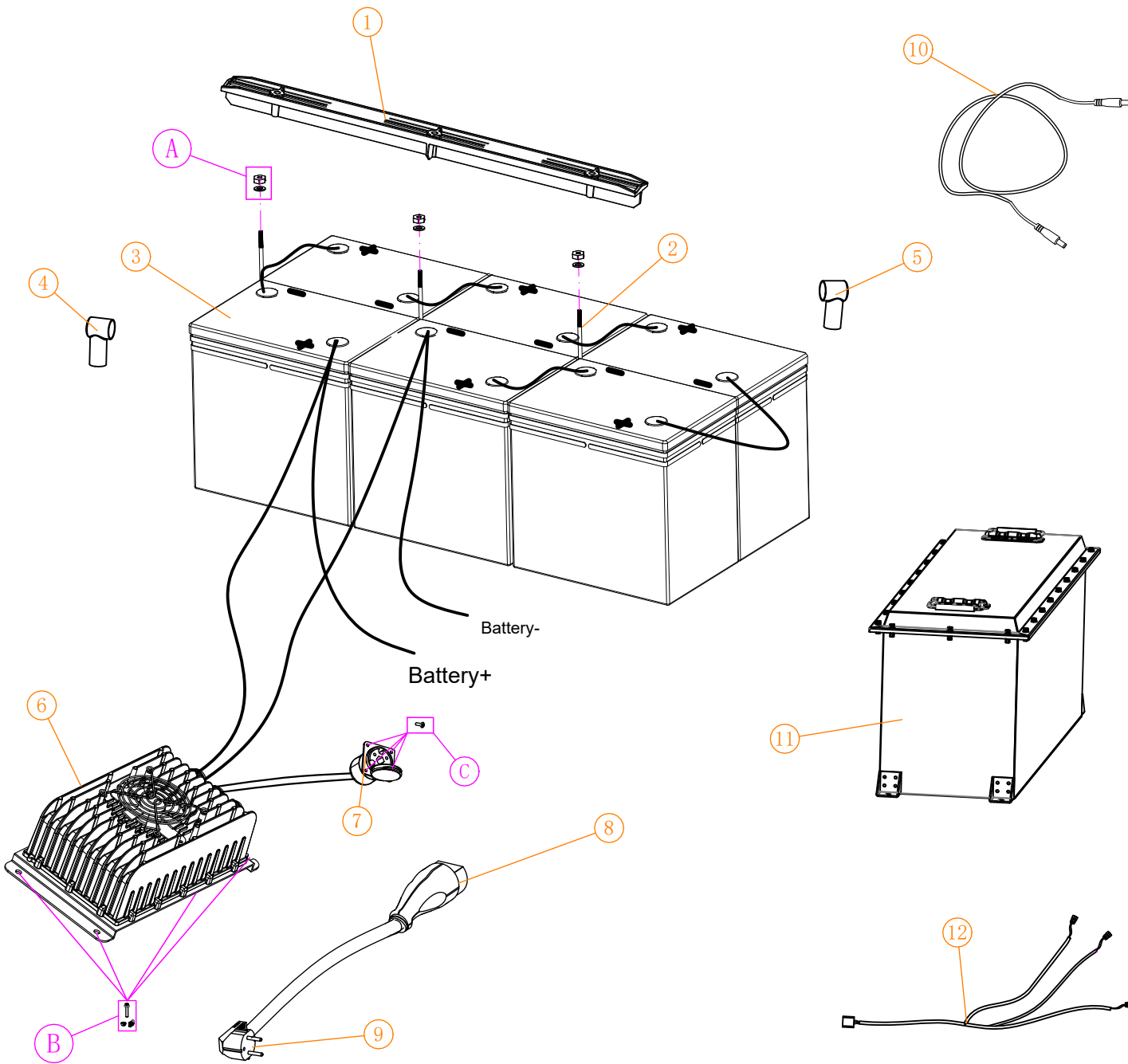
螺丝规格 screw specifications				
NO:	物料编号 Code	物料名称 Name	用量 QTY	备注 Remark
A	3.01.003.100118 3.205.03.010005	四角铆钉 (M6*16) Quadrangle rivet	4	
	3.01.003.060005 3.205.04.010004	法兰螺丝 (6*20) Flange screw	4	
B	3.01.003.060056 3.205.04.010048	法兰螺丝 (8*75) Flange screw	4	
	3.01.003.100014 3.205.04.030003	法兰自锁螺母 (8mm) Flange nut	4	
C	3.01.003.100014 3.205.04.030003	法兰自锁螺母 (8mm) Flange nut	4	
	3.01.003.060016 3.205.04.010014	法兰螺丝 (8*35) Flange screw	4	
D	3.01.003.040015 3.205.01.010060	不锈钢平头十字螺丝 Flat head Phillips screw	8	
	3.01.003.100066 3.205.03.030010	夹片螺母 Clip nut	2	M6 带螺母
E	3.01.003.060016 3.205.04.010014	法兰螺丝 (8*35) Flange screw	2	
	3.205.01.030023	外六角30铝管台阶螺母 Outer hexagonal 30 aluminum tube step nut	2	
F	3.01.003.060008 3.205.04.010007	法兰螺丝 (12*1.25*20) Flange screw	2	
G	3.01.003.060007 3.205.04.010006	法兰螺丝 (10*1.25*20) Flange screw	2	
H	3.01.003.100014 3.205.04.030003	法兰自锁螺母 (8mm) Flange nut	5	
	3.01.003.060023 3.205.04.010020	法兰螺丝 (8*45) Flange screw	5	
	3.01.003.080004 3.205.01.020004	平垫片 Flat gasket	5	
I	3.205.01.030023	外六角30铝管台阶螺母 Outer hexagonal 30 aluminum tube step nut	4	
	3.01.003.080004 3.205.01.020004	平垫片 Flat gasket	4	
	3.01.003.050002 3.205.01.010084	外六角不锈钢螺丝 (8*20) Stainless steel hexagon screw	4	
J	3.01.003.060031 3.205.04.010028	法兰螺丝 (8*60) Flange screw	2	
K	3.01.003.100014 3.205.04.030003	法兰自锁螺母 (8mm) Flange nut	12	
	3.01.003.060011 3.205.04.010009	法兰螺丝 (8*25) Flange screw	12	
L	3.01.003.060004 3.205.04.010003	法兰螺丝 (6*16) Flange screw	2	
	3.01.003.100138 3.205.03.030020	沉头带介内六角内外牙螺母 Nut	2	
M	3.01.003.100014 3.205.04.030003	法兰自锁螺母 (8mm) Flange nut	4	
	3.205.01.010200	外六角30铝管凸肩螺栓 30 aluminum tube shoulder bolt	4	

N	3.01.003.050001 3.205.01.010083	外六角不锈钢螺丝 (6*16) Hexagonal stainless steel screw	2	
	3.01.003.100009 3.205.04.030008	外六角普通螺母 (M6) Hexagon common nut	2	
O	3.205.01.010205	不锈钢木纹平头十字螺丝 (3*14) Stainless steel wood grain flat head cross screw	2	
P	3.01.003.110008 3.205.04.010082	十字槽大扁头自攻螺丝 Cross recessed large flat head self tapping screws	6	5*20 墨绿色

折叠加座零件图 Rear seat parts				
NO:	物料编号 Code	物料名称 Name	用量 QTY	备注 Remark
1	3.203.02.190002	E30加座靠背 灰色 E30 extra seat back	1	
2	3.02.011.300031 3.201.16.010136	827加座靠背衬框 827 rear seat back frame	1	
3	3.02.011.300030 3.201.16.010116	827加座靠背罩 827 rear seat back cover	1	
4	3.209.02.000305	E30加座靠背支架左 E30 extra seat back holder/L	1	
5	3.209.02.000306	E30加座靠背支架右 E30 extra seat back holder/R	1	
6	3.201.16.010435	E30后立柱垫片 E30 rear column pad	4	
7	2.03.109.000009	E30加座侧扶手左 E30 extra seat armrest/L	1	
8	2.03.109.000010	E30加座侧扶手右 E30 extra seat armrest/R	1	
9	3.203.01.190002	E30加座座垫 灰色 E30 extra seat cushion	1	
10	3.02.014.000397 3.201.16.010011	A627折叠加座座垫拉带 Foldable rear seat cushion strap	1	
11	3.201.16.010502	E30折叠加座底板总成 Foldable rear seat bottom plate assy	1	
12	2.03.109.000011	E30加座底架 E30 rear seat frame	1	
13	3.201.16.010484	E30球僮踏板 E30 caddie padel	1	
14	2.03.109.000014	E30球僮踏板支架 E30 caddie padel frame	1	
15	2.03.109.000030	E30球僮踏板固定板 E30 caddie padel fixing plate	2	
16	2.03.109.000012	E30加座后扶手 E30 extra seat rear armrest	1	
17	3.201.16.050020	自动锁止两点式安全带 Automatic locking two-point safety belt	2	可选
18	3.02.014.000347 3.201.16.050016	安全带锁止扣 (直板式) Seat belt Lock Buckle	2	
19	3.201.16.010473	E30牌照灯与摄像头连接座 Mounting bracket	1	
20	3.202.16.030238	倒车摄像头 Reversing camera	1	
21	3.202.01.010074	DOT牌照灯 DOT license plate light	1	
22				

# 电池零件图

## Battery parts



NO:	物料编号 Code	物料名称 Name	用量 QTY	备注 Remark
1	3.02.014.900100 3.201.16.010013	A627电池压条 A617 battery retain clip	1	
2	3.205.03.040013	B617电池卡条螺杆310 Battery clip bolt	3	
3	3.03.006.000025 3.202.06.000002	赛耐克免维护电池(8V) Battery	6	
4	3.02.014.900027 3.201.16.010150	绝缘胶帽(黑色) Insulation rubber caps (black)	6	
5	3.02.014.900026 3.201.16.010149	绝缘胶帽(红色) Insulation rubber caps (red)	6	
6	3.202.09.000164	绿通内置充电机(蓝牙款) LVTONG Built-in charger	1	
7	3.03.009.000124 3.202.09.000145	充电插座-I Charger receptacle-I	1	
8	3.03.009.000125 3.202.09.000146	充电插头-I Charging plug -I	1	
9	3.03.004.000031 3.202.09.000110	车载充电机电源线 Charger power line	1	KE-53
10	3.202.04.000312	B827铅酸电池对接线 B827 lead-acid battery docking cable	1	配铅酸电池
11	3.202.06.000083	动力锂电池PACK/51.2V105AH Power lithium battery	1	
12	3.202.04.000311	B827锂电辅助线束 B827 lithium battery auxiliary wiring harness	1	配锂电池
A	3.01.003.100009 3.205.04.030008	外六角普通螺母(M6墨绿色) Outer hexagonal ordinary nut	3	
	3.01.003.080011 3.205.01.020009	平垫片(1.5*6*18) Flat gasket	3	
B	3.01.003.060004 3.205.04.010003	法兰螺丝(6*16) Flange screw	4	
	3.01.003.100013 3.205.04.030002	法兰自锁螺母(6mm) Flange nut	2	
	3.01.003.100066 3.205.03.030010	夹片螺母(M6) Clip nut	2	
C	3.01.003.020008 3.205.01.010010	不锈钢木纹圆头十字螺丝 Round head tapping screw	4	





